

SAVE THE DATE



The European meeting place
for innovation in **Food, Human,**
and **Animal Nutrition**

October
1st & 2nd
2024
Lille,
FRANCE

10th EDITION

Food
supplements



Ingredients
processing



Finished food
products

Feed
& pet food



Excipients
& functional
ingredients

Organisers:



Institutional partners:



With the support of:

NUTREVENT AT A GLANCE

NutrEvent is your opportunity to connect with international key innovators in the **Food, Human and Animal Nutrition** sectors. As a **unique European partnering event**, NutrEvent provides the ideal environment for academic and industrial actors to:

- **Build** partnerships
- **Source** innovative and competitive R&D projects
- **Foster** the emergence of collaborative projects
- **Increase** licensing opportunities
- **Obtain** funding and facilitate market access

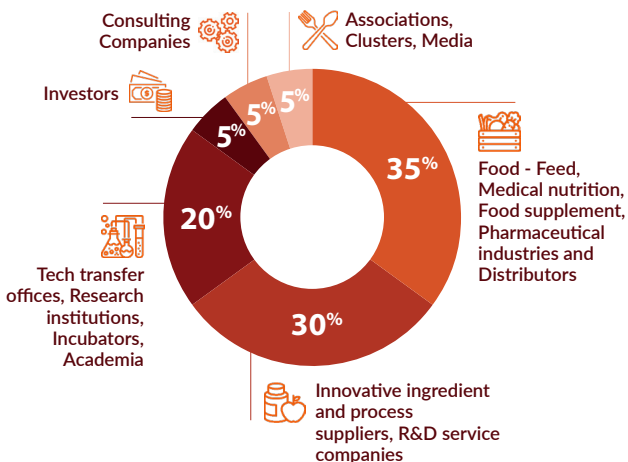


+600
DELEGATES



+25
COUNTRIES
REPRESENTED

Who will you meet?



Inside the event



One-on-one meetings



Start-up Slams

Conferences



Exhibition



ONE-ON-ONE MEETINGS

48
hours

TO MEET YOUR FUTURE
PROJECT PARTNERS,
ACCELERATE
INNOVATION AND
OBTAIN FUNDING

IDENTIFY



MEET



CONNECT

PARTNER

They trust us

FOOD, FEED, CLINICAL NUTRITION AND FOOD SUPPLEMENT INDUSTRIES

Agrial | Alver World SA | Beneo | Bridor Sodebo | Bosque
Foods | Bonduelle | Danone | Divaks | Eurial | Fleury Michon |
FrieslandCampina | Lactalis | Lonza | McCain | Mondelez | Nestlé
| Nutrileads | Pierre Fabre Group | Sodiaal | Symrise |
The akkermansia company...

INGREDIENT SUPPLIERS AND DISTRIBUTORS

Abyss Ingredient | Armor Proteines | BASF | Cargill | DSM |
Evolva | Givaudan | Ingredia | Ingredion | IMCD | Jungbunzlauer |
Kreglinger | Lallemand | Lesaffre | Naturex | Nexira | Nuscience |
Probiotal | Roquette | Rousselot Health & Nutrition | SeaNova |
Sensient | Onima (ex-Yeasty)...

TTO, ACADEMIA & RESEARCH INSTITUTES

Charles Violette Institute | ILSI Europe | INRAE |
Institute of Nutrition and Functional Foods |
Institut Pasteur de Lille | Kaunas University of Technology |
Laval University | Max Planck Institute | McGill University |
Monash University | NIZO food research | Qualiment |
TNO | UCLouvain | University of Leeds | University of Sevilla |
University of Surrey | Vrije Universiteit Brussel | Wageningen
University | Westminster University...

INVESTORS

Big Idea Ventures | Capital V | Carbyn partners | Cerea partners |
DSM Venturing | Five Seasons Ventures | New Protein Capital |
Peakbridge | Rockstart | Roquette Ventures | Seventure Partners
| Sienna Venture Capital | Tate & Lyle Ventures | The Yield Lab...

TECHNOLOGY AND SERVICE PROVIDERS

BaseClear | Biofortis | Bruker | BRAIN | ESIM Chemicals
| Extractis | Lycotec | Merieux Nutrisciences | Nat'Inov |
Phytocontrol | Procidys | Revobiom | Zymoptiq...

CONFERENCES



60 HIGH-LEVEL SPEAKERS

Steered by a prestigious Committee, NutrEvent offers a comprehensive programme dealing with the **R&D innovations and the latest market trends** in Food, Human and Animal Nutrition. Structured around 3 tracks, the conference sessions bring together international experts to discuss current innovation stakes and provoke conversations that matter for players in food supplements, finished food products and feed.

1 Latest trends in food supplement innovation

2 Innovation in finished food products: Combining nutrition and sustainability

3 Animal nutrition innovation highlights

STEERING COMMITTEE

INDUSTRY & INVESTORS

- **Alain Baniel**, R&D Manager, Ingredia
- **Majbritt Byskov-Bridges**, Co-Founder & COO, Alver
- **Blanca Camarasa**, European Sales Manager, Biocatalysts
- **Eric Chappuis**, R&D Scientific & Regulatory Affairs Senior Scientist, Cargill
- **Isabelle de Crémoux**, CEO, Seventure Partners
- **Juliette Raoul-Fortésa**, Associate, Capagro
- **Stéphane Georgé**, Collaborative Project Emergence Cell Manager, CTCPA - Centre Technique de la Conservation des Produits Agricoles
- **Catherine Lefranc-Millot**, Senior Nutrition & Health R&D Manager, Roquette Group
- **Françoise Le Vacon**, Chief Scientific Officer, Biofortis
- **Emmeline Salameh**, Research Scientist in Nutrition, Lactalis
- **Christine O'neil**, CEO, Healthy Ingredient Solutions (HISCO)
- **Bertrand Rodriguez**, Research and Applications - BIOTIC Team Leader, Gnosis by Lesaffre
- **Isabelle Socquet**, R&D scientific and medical communication, Arkopharma

ACADEMIA

- **Laurent Bazinet**, Professor, Institute of Nutrition and Functional Foods (INAF)
- **Clair-Yves Boquien**, Deputy Director, CRNH Ouest
- **Jean-Michel Lecerf**, Physician and Nutritionist specialist & Head of Nutrition service, Institut Pasteur de Lille
- **Roberta Re**, Director, Cambridge Food Science

ASSOCIATIONS & CLUSTERS

- **François Baglinière**, Agro-Industry and Food Transition Project Manager, Biotech Santé Bretagne
- **Jean-François Balducchi**, Managing Director, Atlanpole
- **Doris Bell**, Funding Advisor for EU programmes, German Aerospace Center, NCP Life Sciences
- **Nico van Belzen**, Director General, ScienceConsult
- **Yuan Chai**, International Affairs Officer, Wagralim
- **Kees De Gooijer**, Director, TKI Agri&Food
- **Florence Hallouin**, Deputy Director, Atlanpole Biotherapies
- **Jean-Luc Perrot**, Executive Director, Valorial
- **Etienne Vervaecke**, General Manager, Eurasanté & Clubster NHL

START-UP SLAMS

The **NutrEvent Start-up Slams** offer the opportunity to detect the most innovative and promising start-ups, in order to foster **partnerships and business development** in the Food, Human and Animal Nutrition sectors.



The selected candidates will pitch to a jury of experts and in front of NutrEvent's audience and receive advice and feedback ("**speed-mentoring**") from a panel of experts.

Before the event, each candidate will have enhanced visibility on NutrEvent communications and the opportunity to be coached to improve their pitch during a **warm-up session** with NutrEvent Steering Committee members.

The winner(s) will be awarded as the **most innovative start-up(s)** in Europe.

The Start-up Slams are a great opportunity for **young companies** seeking to raise a financing round to showcase their project in front of potential partners and investors.

APPLY

Before June 26th, 2024

BE SELECTED

By a jury of experts

PITCH

During NutrEvent

JOIN NUTREVENT 2024

Registration fees

FULL PASS

Fees per person
(excl. VAT)

	SUPER EARLY BIRD OFFER Before February 8 th , 2024 incl.	EARLY BIRD OFFER From February 9 th to April 4 th , 2024 incl.	REGULAR FEE From April 5 th to August 1 st , 2024	LATE REGISTRATION From August 2 nd , 2024
Mature company (> 5 years old)	€ 690	€ 794	€ 897	€ 995
Non-profit organisation / TTO / Research institute	€ 550	€ 633	€ 715	€ 757
Emerging company (≤ 5 years old)	€ 420	€ 483	€ 546	€ 635
SME (≤ 5 employees)	€ 420	€ 483	€ 546	€ 635
Academic research fellow / Associate	€ 330	€ 380	€ 429	€ 477

Investor

Contact us: Nicolas Lechevallier | nlechevallier@eurasante.com | +33 (0)3 28 55 90 71

VISITOR PASS

Fee per person (excl. VAT)

€ 300

Exhibition fees

(excl. VAT)

	SUPER EARLY BIRD OFFER Before February 8 th , 2024 incl.	EARLY BIRD OFFER From February 9 th to April 4 th , 2024 incl.	REGULAR FEE From April 5 th , 2024
Start-up corner 4m² (≤ 5 years old incl. 1 full pass)	€ 1,430	€ 1,573	€ 1,727
6 m² fitted stand (incl. 1 full pass* + 1 visitor pass**)	€ 1,870	€ 2,057	€ 2,260
9 m² fitted stand (incl. 1 full pass* + 1 visitor pass**)	€ 3,080	€ 3,388	€ 3,718
12 m² fitted stand (incl. 1 full pass* + 2 visitor passes**)	€ 4,290	€ 4,719	€ 5,192
18 m² fitted stand (incl. 2 full passes* + 1 visitor pass**)	€ 6,050	€ 6,655	€ 7,315

*The FULL PASS gives access to all NutrEvent activities including the partnering platform to pre-organise one-on-one meetings.

**The VISITOR PASS gives access to all NutrEvent activities except the partnering platform.

Sponsorship opportunities

(excl. VAT)



PLATINUM
Sponsor

€ 20,000



GOLD
Sponsor

€ 17,000



SILVER
Sponsor

€ 12,500



BRONZE
Sponsor

€ 7,500

Please contact us for customised sponsorship and exhibition opportunities.

Contact

Nicolas Lechevallier
nlechevallier@eurasante.com
+33 (0) 328 559 071

Event venue

LILLE GRAND PALAIS
1, Boulevard des Cités Unies
59777 Lille, FRANCE

www.nutrevent.com

NutrEvent